



### Main

Range of product	Modicon X80
Product or component type	Discrete input module
Discrete input number	16
Discrete input type	Isolated
Input type	Capacitive
Discrete input voltage	100...120 V AC
Discrete input current	2 mA

### Complementary

Input compatibility	2-wire proximity sensor conforming to IEC 60947-5-2 2-wire proximity sensor conforming to IEC 61131-2 Type 1
Network frequency	50/60 Hz
Network frequency limits	47...63 Hz
Sensor power supply	85...132 V
Current state 1 guaranteed	$\geq 2$ mA
Current state 0 guaranteed	$\leq 1$ mA
Input impedance	14000 Ohm
Insulation resistance	$> 10$ MOhm 500 V DC
Power dissipation in W	5 W
AC activation response time	10 ms
AC deactivation response time	20 ms
Typical current consumption	76 mA at 3.3 V DC
MTBF reliability	970000 H
Protection type	1 external fuse per group of channel 0.25 A fast blow
Voltage detection threshold	$< 40$ V AC sensor fault $> 85$ V AC sensor OK
Status LED	1 LED (green) module operating (RUN) 1 LED per channel (green) channel diagnostic 1 LED (red) module error (ERR) 1 LED (red) module I/O
Net weight	0.157 kg

### Environment

IP degree of protection	IP20
Dielectric strength	1780 V AC at 50/60 Hz 1 min
Vibration resistance	3 gn
Shock resistance	30 gn
Ambient air temperature for storage	-40...85 °C
Ambient air temperature for operation	0...60 °C
Relative humidity	0...95 % at 0...60 °C without condensation
Operating altitude	0...2000 m 2000...5000 m with derating factor

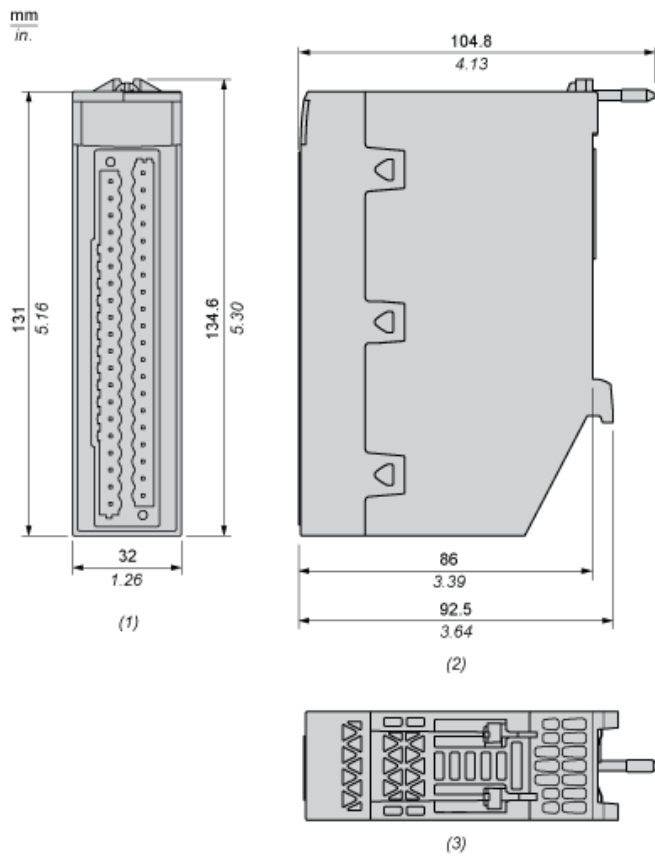
## Packing Units

Package 1 Weight	290.000 g
Package 1 Height	5.700 cm
Package 1 width	18.000 cm
Package 1 Length	26.000 cm

## Offer Sustainability

Sustainable offer status	Green Premium product
REACH Regulation	<a href="#">REACH Declaration</a>
EU RoHS Directive	Pro-active compliance (Product out of EU RoHS legal scope) <a href="#">EU RoHS Declaration</a>
Mercury free	Yes
RoHS exemption information	<a href="#">Yes</a>
China RoHS Regulation	<a href="#">China RoHS Declaration</a>
Environmental Disclosure	<a href="#">Product Environmental Profile</a>
Circularity Profile	<a href="#">End Of Life Information</a>
WEEE	The product must be disposed on European Union markets following specific waste collection and never end up in rubbish bins

Dimensions



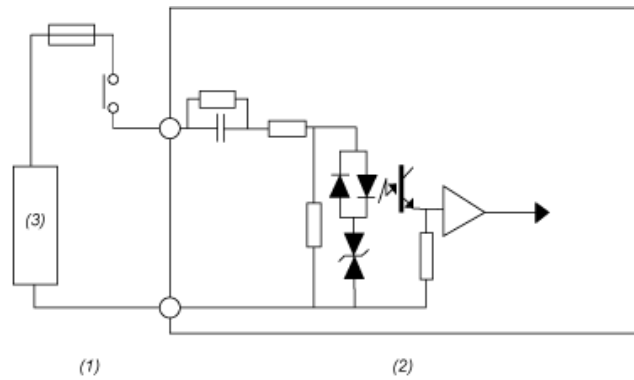
- (1) Front view
- (2) Right view
- (3) Top view

---

Connecting the Module

---

Input Circuit Diagram



- (1) Process
- (2) Module
- (3) Power supply

